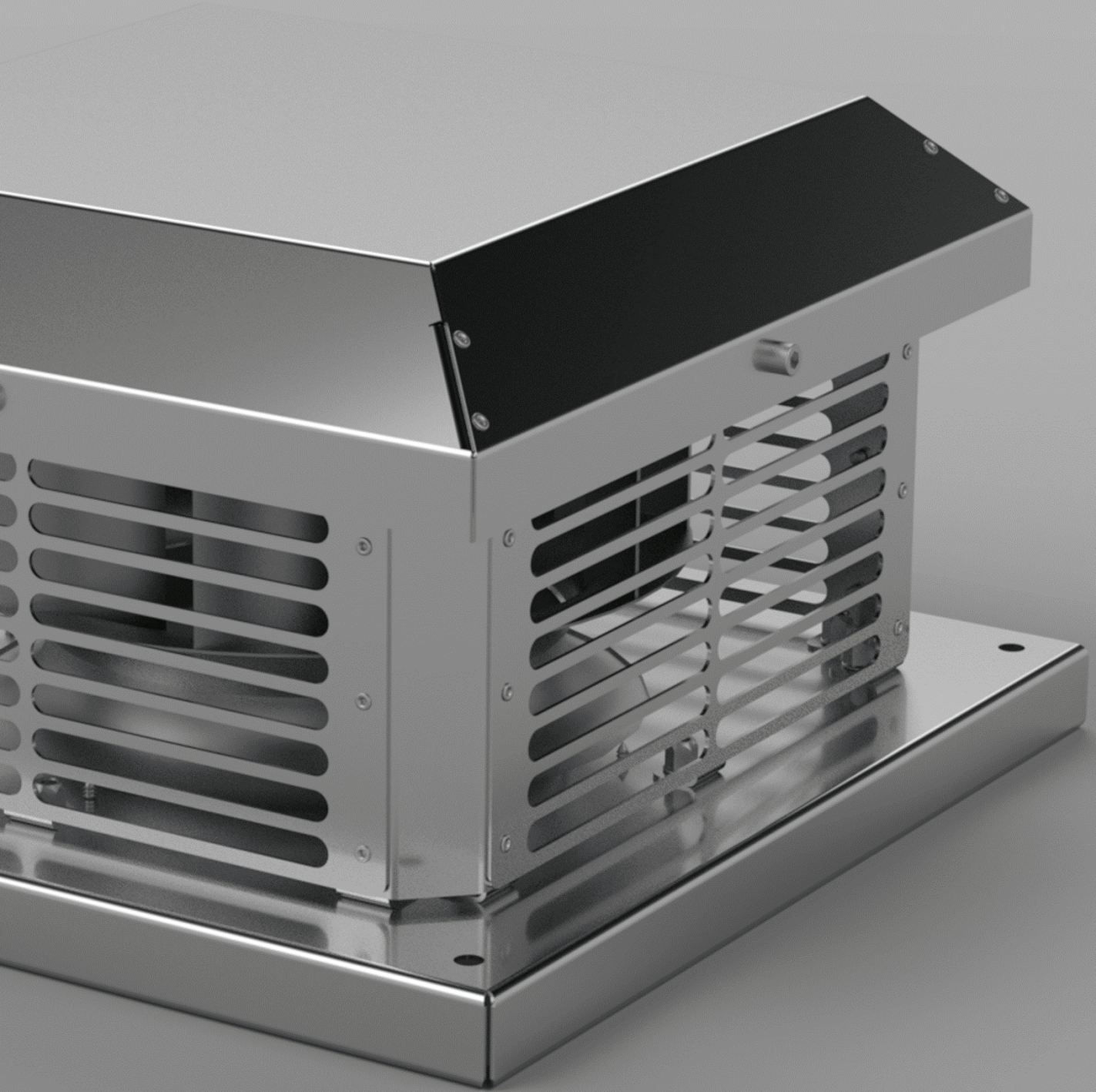


**VENTURKA** 

**ÇTF**  
**Roof Type**  
**Radial Fan**



**[venturka.com](http://venturka.com)**

## Technical Specifications

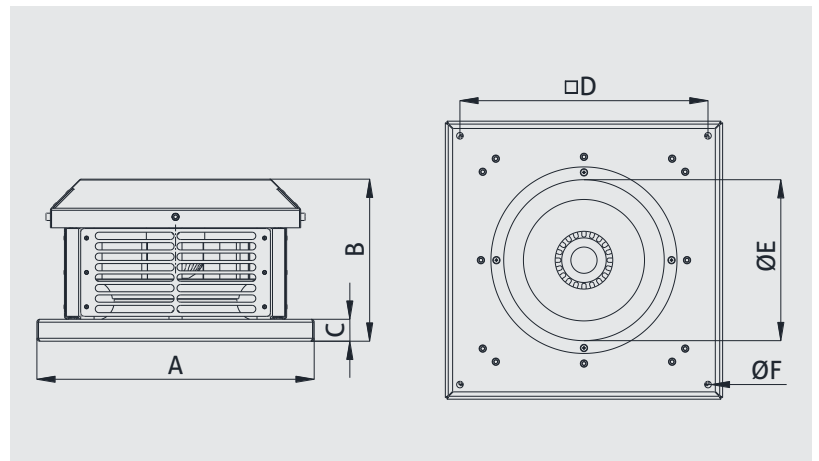
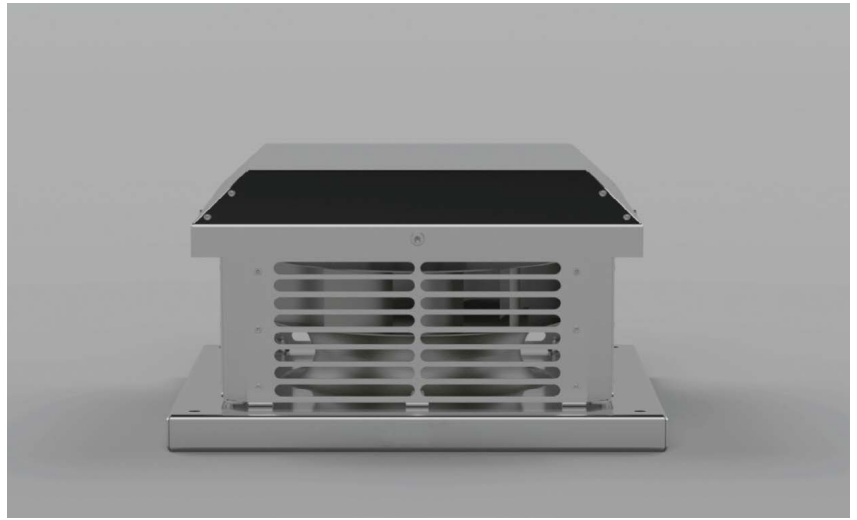
# ROOF TYPE RADIAL FAN

ÇTF (230V) series roof type radial fans; are the ideal fans for roof installation in ventilation systems where high air flow and high pressure are required. They have high performance and trouble-free operation specifications.

Made of high quality corrosion resistant galvanized steel. Fans are radial fans with backward curved blades. Motors are single phase and has IP44 and Class F insulation. Speed controller is optional for all models.

### Usage Areas

Can be used in all kinds of industrial building, office, kitchen and residential building ventilation systems where compact solutions are needed.

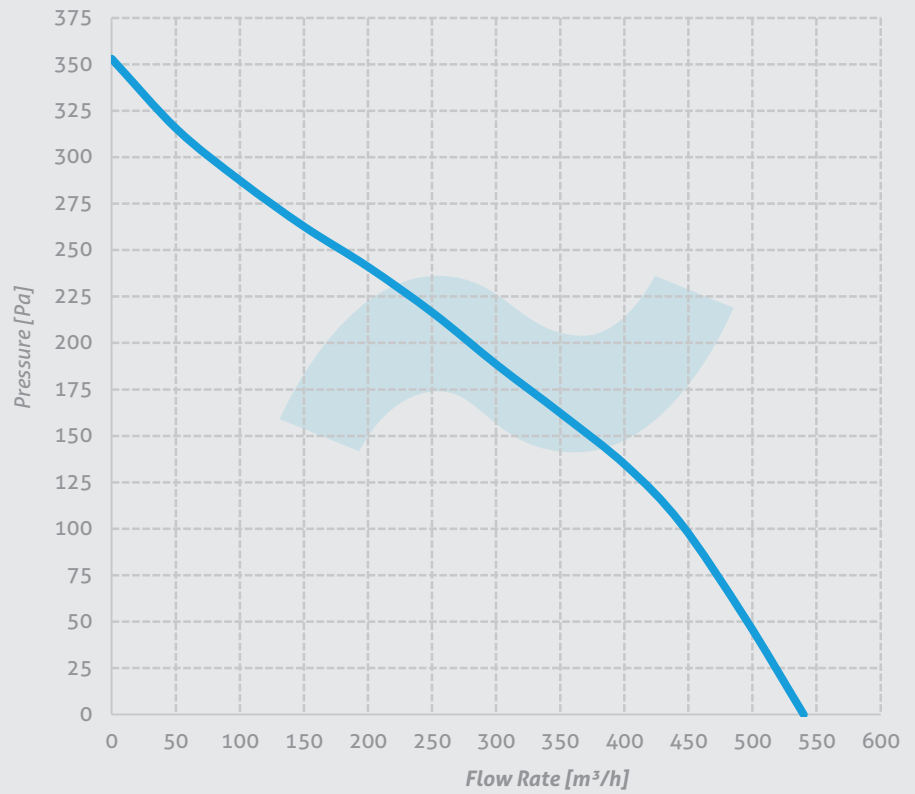


MODEL	A	B	C	D	E	F	VOLTAGE	FREQUENCY	MOTOR POWER	CURRENT	CAPACITOR	MOTOR SPEED	FLOW RATE	SOUND PRESSURE LEVEL	WEIGHT
	mm	mm	mm	mm	mm	mm	V	Hz	W	A	µf	rpm	m <sup>3</sup> /h	dBa	kg
ÇTF-1	320	175	30	280	145	9	230	50	66	0,3	3	2300	540	52	6,5
ÇTF-2	350	190	30	310	190	9	230	50	100	0,47	3	2580	800	56	8,3
ÇTF-3	360	210	30	320	170	9	230	50	150	0,7	4	2600	1020	58	8,5
ÇTF-4	380	220	30	340	220	9	230	50	200	0,9	6	2600	1520	58	9,7
ÇTF-5	410	220	30	370	220	9	230	50	250	1,1	8	2500	1840	60	11
ÇTF-6	500	310	30	460	270	9	230	50	210	1	8	1400	2520	62	17
ÇTF-7	570	365	30	530	310	11	230	50	500	1,8	12	1380	4100	64	28
ÇTF-8	630	365	30	590	310	11	230	50	500	2,2	12	1300	5600	65	31

## Performance Curves

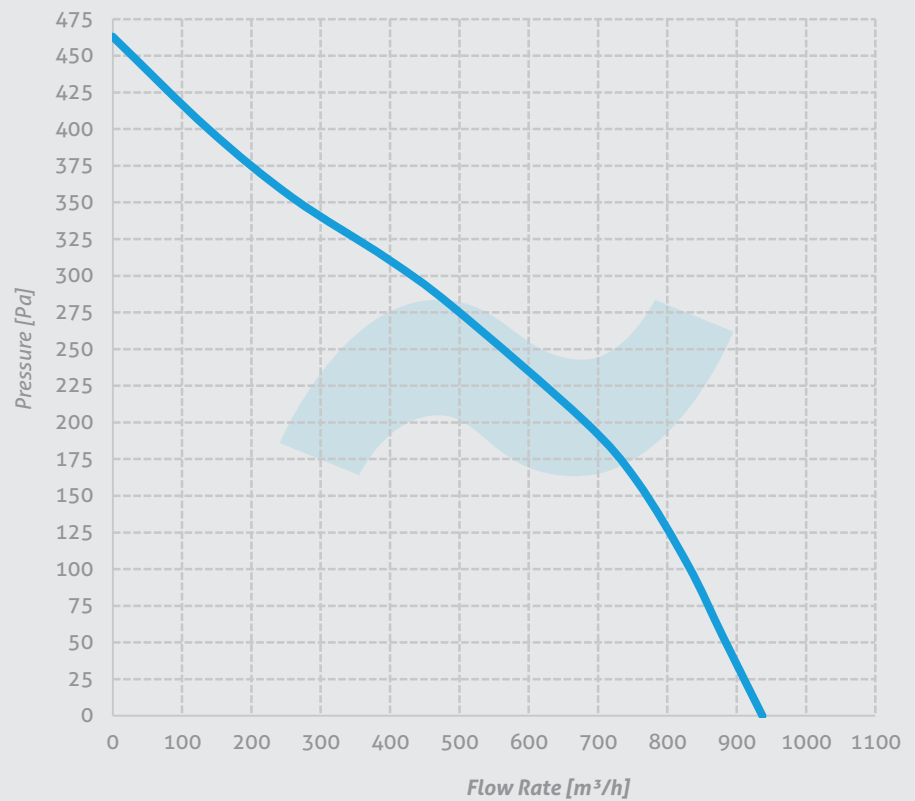
### ÇTF-1

Voltage 230 V  
Frequency 50 Hz  
Current 66 W  
Current 0,3 A  
Capacitor 3  $\mu$ f  
Motor Speed 2300 rpm  
Flow Rate 540 m<sup>3</sup>/h  
Sound Pressure Level 52 dBA  
Weight 6,5 kg



### ÇTF-2

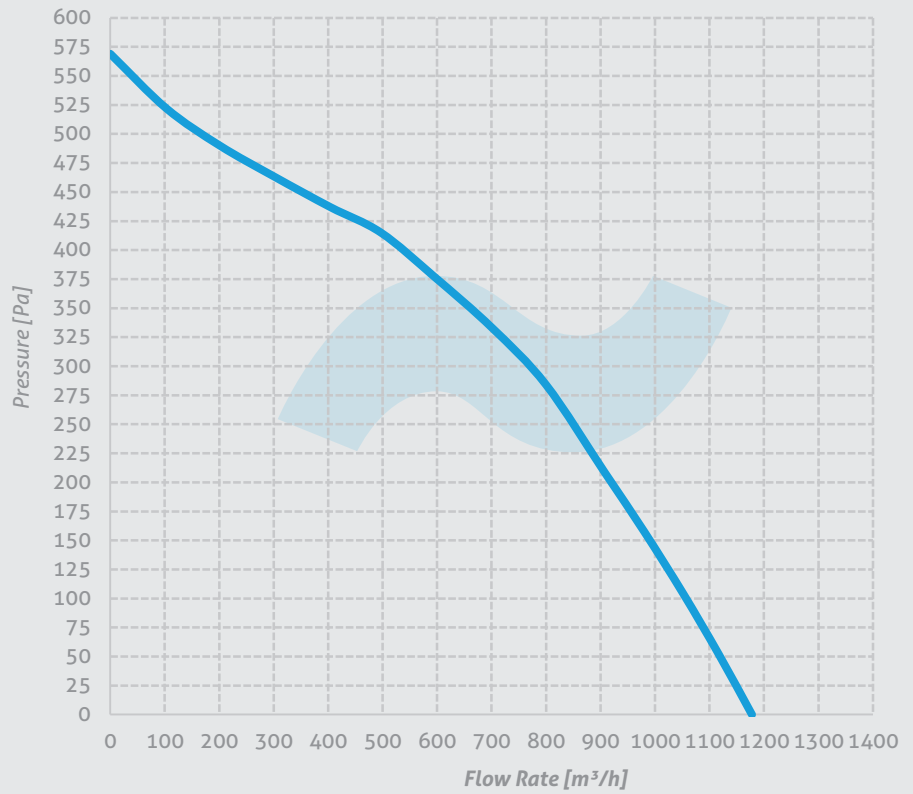
Voltage 230 V  
Frequency 50 Hz  
Current 100 W  
Current 0,47 A  
Capacitor 3  $\mu$ f  
Motor Speed 2580 rpm  
Flow Rate 800 m<sup>3</sup>/h  
Sound Pressure Level 56 dBA  
Weight 8,3 kg



## Performance Curves

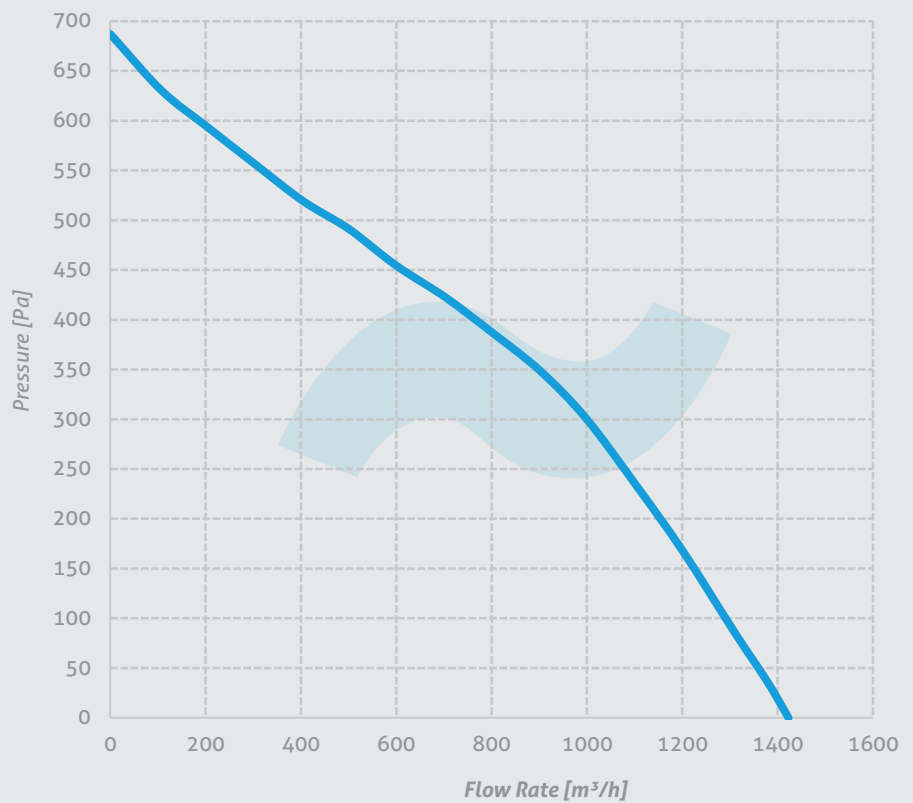
### ÇTF-3

Voltage 230 V  
Frequency 50 Hz  
Current 150 W  
Current 0,7 A  
Capacitor 4  $\mu$ f  
Motor Speed 2600 rpm  
Flow Rate 1020m<sup>3</sup>/h  
Sound Pressure Level 58 dBA  
Weight 8,5 kg



### ÇTF-4

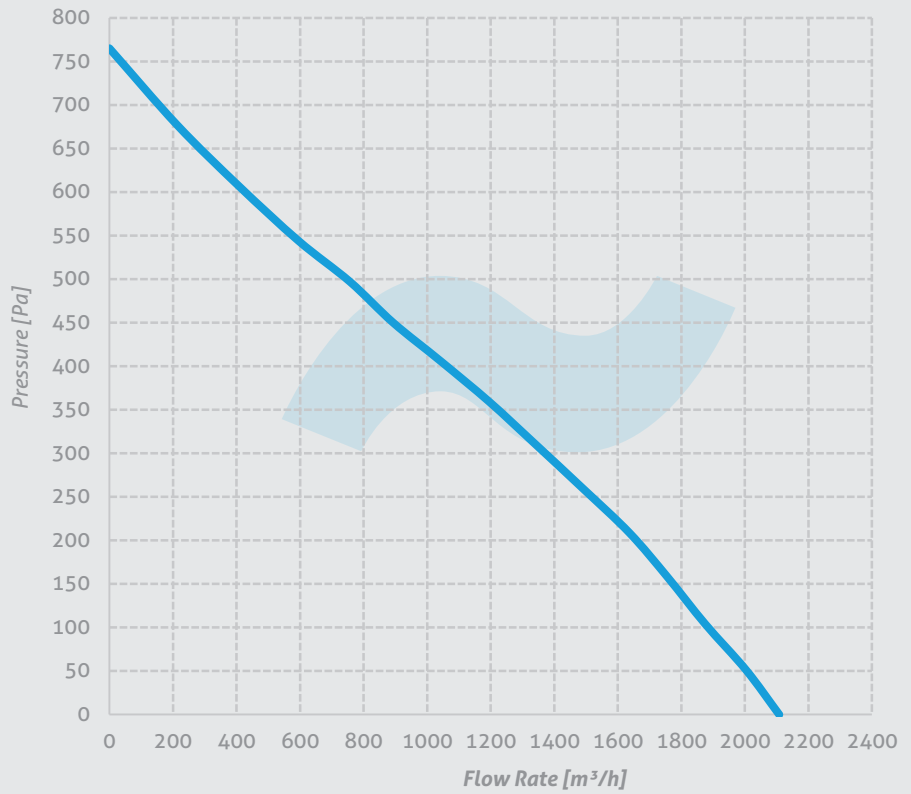
Voltage 230 V  
Frequency 50 Hz  
Current 200 W  
Current 0,9 A  
Capacitor 6  $\mu$ f  
Motor Speed 2600 rpm  
Flow Rate 1520 m<sup>3</sup>/h  
Sound Pressure Level 58 dBA  
Weight 9,7 kg



## Performance Curves

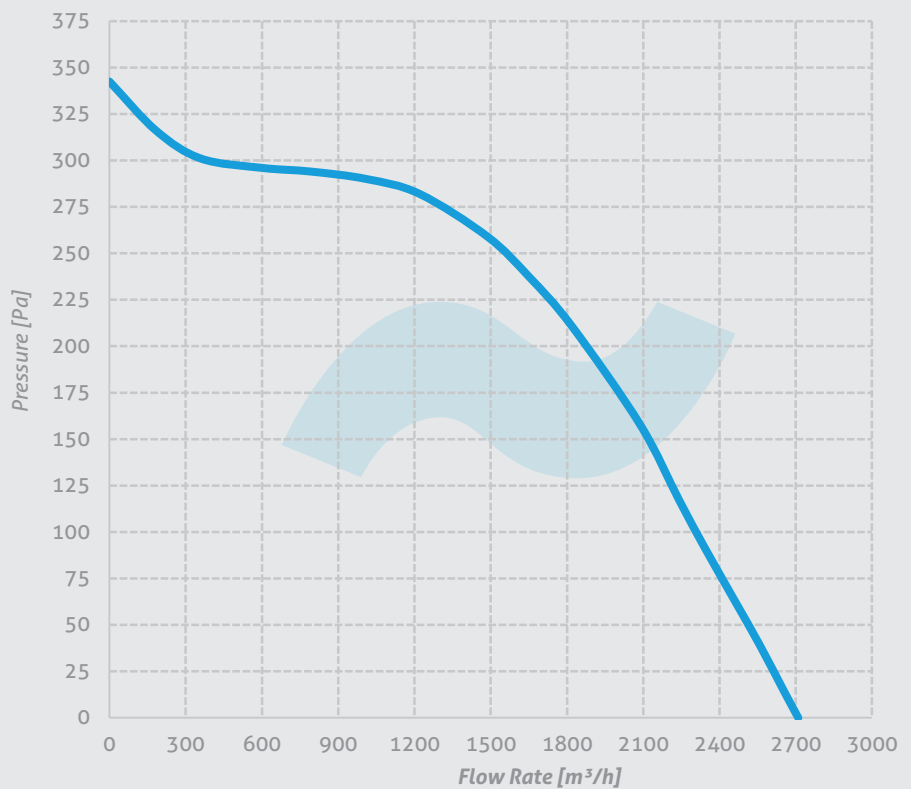
### ÇTF-5

Voltage 230 V  
Frequency 50 Hz  
Current 250 W  
Current 1,1 A  
Capacitor 8  $\mu$ f  
Motor Speed 2500 rpm  
Flow Rate 1840 m<sup>3</sup>/h  
Sound Pressure Level 60 dBA  
Weight 11 kg



### ÇTF-6

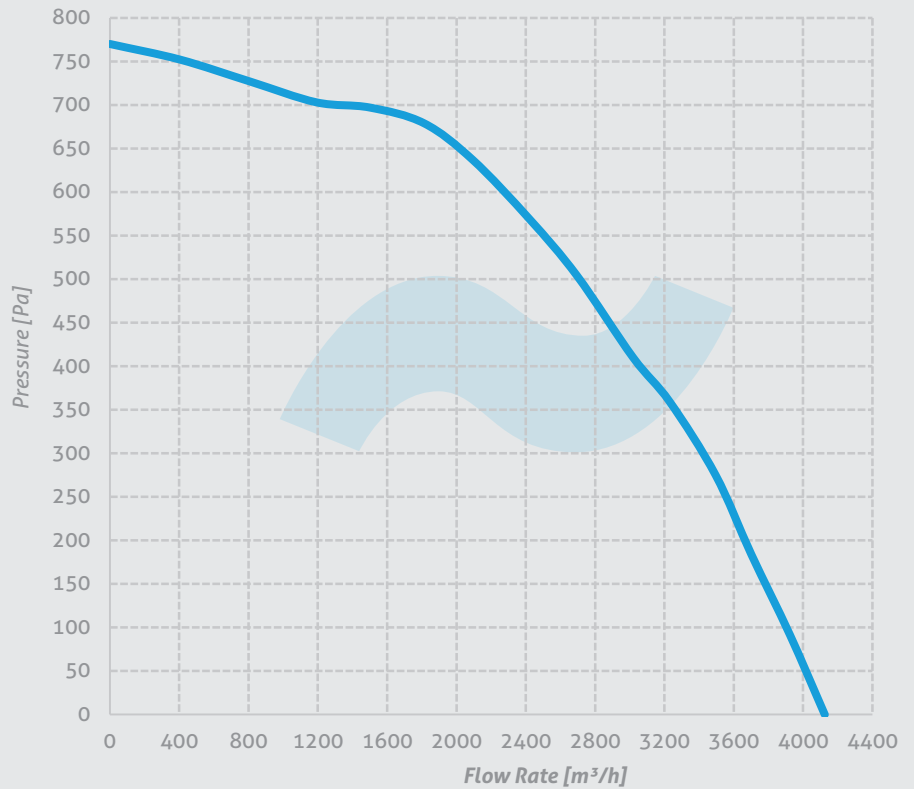
Voltage 230 V  
Frequency 50 Hz  
Current 210 W  
Current 1 A  
Capacitor 8  $\mu$ f  
Motor Speed 1400 rpm  
Flow Rate 2520 m<sup>3</sup>/h  
Sound Pressure Level 62 dBA  
Weight 17 kg



## Performance Curves

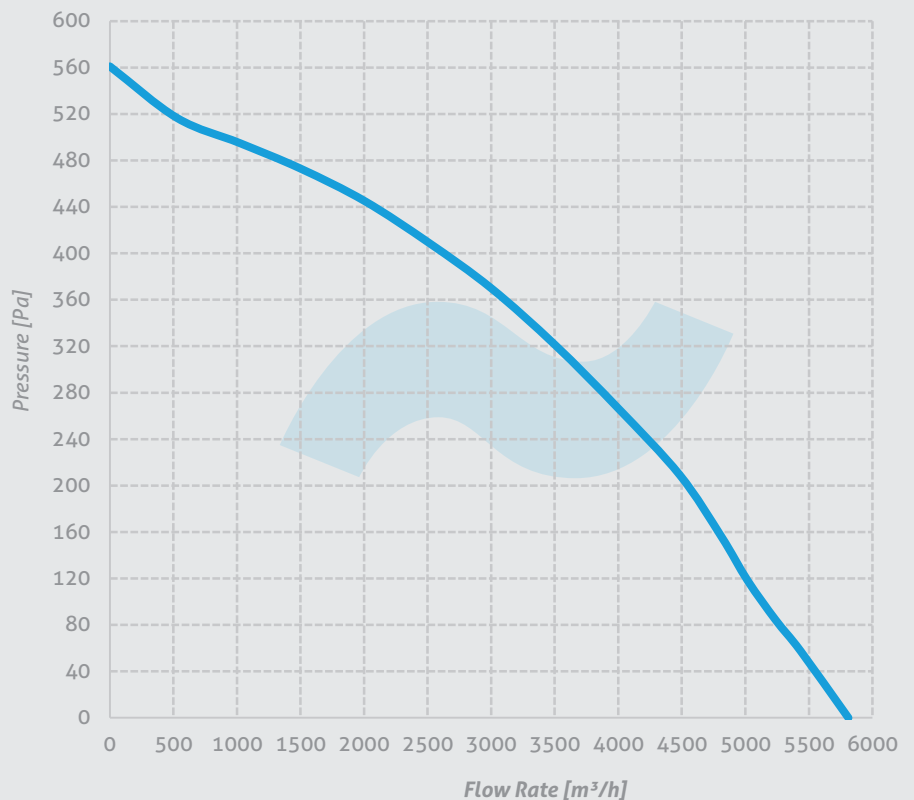
### ÇTF-7

Voltage 230 V  
Frequency 50 Hz  
Current 500 W  
Current 1,8 A  
Capacitor 12  $\mu$ f  
Motor Speed 1380 rpm  
Flow Rate 4100 m<sup>3</sup>/h  
Sound Pressure Level 64 dBA  
Weight 28 kg



### ÇTF-8

Voltage 230 V  
Frequency 50 Hz  
Current 500 W  
Current 2,2 A  
Capacitor 12  $\mu$ f  
Motor Speed 1300 rpm  
Flow Rate 5600 m<sup>3</sup>/h  
Sound Pressure Level 65 dBA  
Weight 31 kg



# ***VENTURKA***

## **Contact:**

Export Sales Representative: **Mr. Alparslan ASLAN**

Mobile: **+90 538 341 93 11** (WhatsApp: OK)

E-Mail: **[export@venturka.com](mailto:export@venturka.com)**